

## Certificate of Analysis

Date:	2025-11-12 16:00:08 -05:00	Cultivar:	
Serial:	LL030645	Moisture:	0.0%
LightLab	BW-LABS	Col Tests Remaining:	23
Operator:	DAIANA	CoA Revision:	0
Sample ID:		Calibration Exp:	2026-03-21
Method:	LightLab HPLC	Product:	Delta 8 Infused Gummies 50mg
Test Type:	Gummy- Advanced	SKU:	Blue Raspberry
Weight / Volume:	0.468 g	Batch:	WGBR1784
Solvent:	40 ml		
Temperature:	26.5 °C		
Notes:			

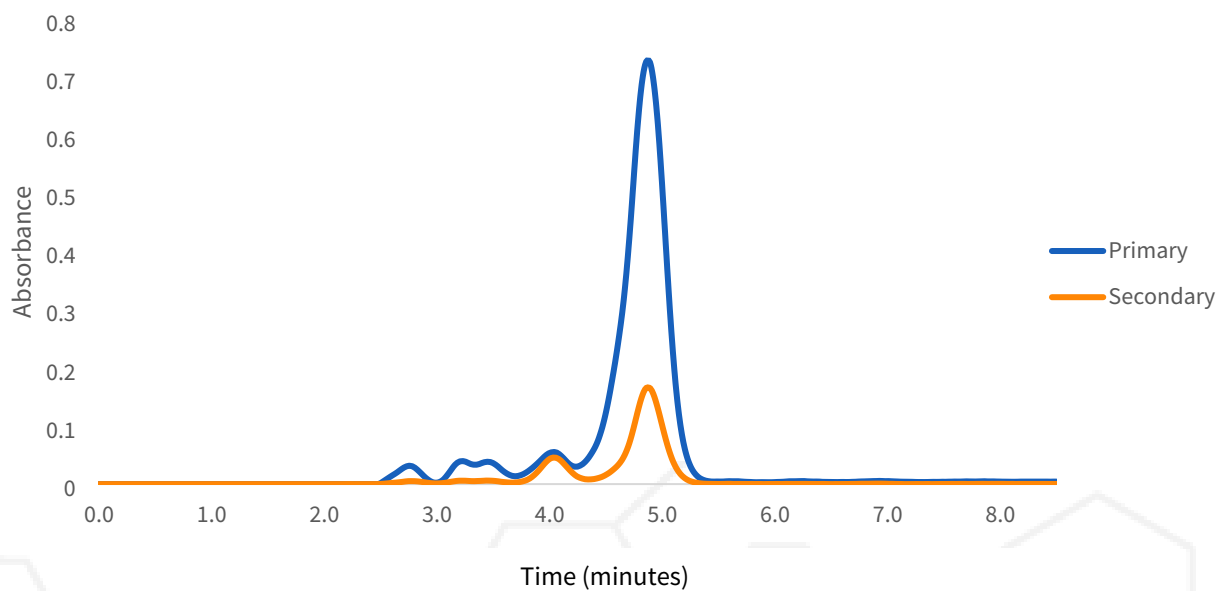
### Cannabinoid Profile

Analyte	Per 4.200 g Serving (mg)	Per 1.0 Pieces(mg)	%	LOQ
THC-A	ND	ND	ND	0.014
Δ9-THC	0.92	0.92	0.022	0.014
CBD-A	ND	ND	ND	0.014
CBG-A	ND	ND	ND	0.014
CBD/CBG	0.76	0.76	0.018	0.014
CBN-A	ND	ND	ND	0.014
CBN	0.77	0.77	0.018	0.014
CBC-A	ND	ND	ND	0.014
CBC	ND	ND	ND	0.014
Δ8-THC*	48.9	48.9	1.2	0.055
Δ10-THC	ND	ND	ND	0.014
THCV-A	1.4	1.4	0.033	0.014
THCV	1.1	1.1	0.027	0.014
Terpenes			Low	
<b>Total THC</b>	<b>0.92</b>	<b>0.92</b>	<b>0.022</b>	
<b>Total Cannabinoids</b>	<b>53.8</b>	<b>53.8</b>	<b>1.3</b>	

ND = Not Detected; n/a = Not Analyzed; LOQ = Limit of Quantification; Total THC = (0.877 x THC-A) + Δ9-THC; Total CBD = (0.877 x CBD-A) + CBD. \* Δ8THC has lower precision and higher detection limit than other cannabinoids.

## Chromatogram

---



## Sample Images

---



## Change History

---

Date	User	Action
2025-11-12 16:00:08 -05:00		Test Recorded
2025-11-18 10:31:23 -05:00	DA	Added an image
2025-11-18 10:31:48 -05:00	DA	Changed Operator from "" to "DAIANA". Changed EdblProduct from "" to "Delta 8 Infused Gummies 50mg". Changed Batch from "" to "WG1784".
2025-11-18 10:31:51 -05:00		Generated a CoA (revision 0)



Approved

11/12/2025

Date



Scan for Authenticity

The signatory confirms that the Operator has performed the sample preparation according to the LightLab User's Guide. This report is for quality assurance purposes only. These results relate only to the sample included on this report. Orange Photonics makes no claims as to the efficacy, safety, or risks associated with any detected or non-detected level of any compounds reported herein. Orange Photonics makes no claims regarding the adherence to sample preparation guidelines, by the operator, as outlined in the LightLab User's Guide.

